

FOR LEASE: SLO RANCH FARMS & MARKETPLACE



CLICK LOGO FOR WEBSITE LINK



170 West Grand Ave, Suite 203
Grover Beach, CA 93433

Office 805.481.9010
Fax 805.880.8100
Web www.hartcre.com

Jason Hart
Broker #01334694
Mobile 805.709.6491
Email jason@hartcre.com

CURRENT AVAILABILITIES



Building Availabilities

Market (leased)	4,529 SF
Restaurant (leased)	5,000 SF
AG Processing Building	
Creamery (leased)	2,247 SF
Sushi/Ramen (leased)	949 SF
Pizza (leased)	1,104 SF
Persian BBQ (leased)	1,332 SF
Vegan (leased)	903 SF
Wine Bar/Distillery	1,988 SF
Outdoor Bar	1,000 SF
Retail Building	
Coffee (leased)	1,348 SF
Pet Shop (leased)	1,192 SF
Ice Cream (leased)	814 SF
Bakery (leased)	860 SF
Retail (leased)	1,720 SF
Pilates (leased)	1,100 SF
Events (leased)	697 SF
2nd Floor Executive Offices	
Historic House (leased)	2,250 SF



170 West Grand Ave, Suite 203
Grover Beach, CA 93433

Office 805.481.9010
Fax 805.880.8100
Web www.hartcre.com

Jason Hart
Broker
Mobile 805.709.6491
Email jason@hartcre.com

OVERVIEW

Summary

- **Total SQ FT:** 33,500
- **Est. Delivery:** Fall 2023
- **Est. Opening:** Early 2024
- **Parking:** ON SITE ASPHALT 75 SPACES (4 ADA)
- **Rents:** \$3.50 SF NNN
- **TIA:** Negotiable

Overview

SLO Ranch Farms and Marketplace will be the keystone to San Luis Ranch which is bringing over 580 residential units, a hotel, office complex, a and commercial and retail center to the city of San Luis Obispo. Located on Highway 101, the Marketplace will be a highly visible and easily accessed commercial property. The Farm & neighborhood, surrounding community and travelers alike.

The Marketplace will showcase several distinct features that will attract a wide range of customers. The forefront will be a permanent farmer's market style market. The market will be surrounded and supported by a restaurant, retail shopping and an agricultural processing building. In addition, attached to the Farm & Marketplace plaza there are nearly 40 acres of a working farm. Within this prime agricultural acreage there will be community garden plots and interactive seasonal farming. The seasonal farming will include pumpkin patches, hayrides, berry picking, and other activities intended to engage the public.

The Farm & Marketplace is intended to bring people together. It will be designed with a safe and friendly open-air concept. The architecture will take its cues from the historic ranch and barn that were located on the San Luis Ranch property. Large barn or roll-up doors will create scenic indoor-outdoor spaces. Permanent outdoor seating and fire pits will be fixtures in the plaza. There will be a stage for events and public gatherings.

With its great location, high visibility, and easy access for many near by residents, SLO Ranch Farm and Marketplace will be destination stop for locals, tourists, and travelers alike. Its potential to reach many customers will make the commercial spaces highly desirable for many local businesses. SLO Ranch Farm and Marketplace will provide a unique opportunity to be part of a 'farm-to-table' community.

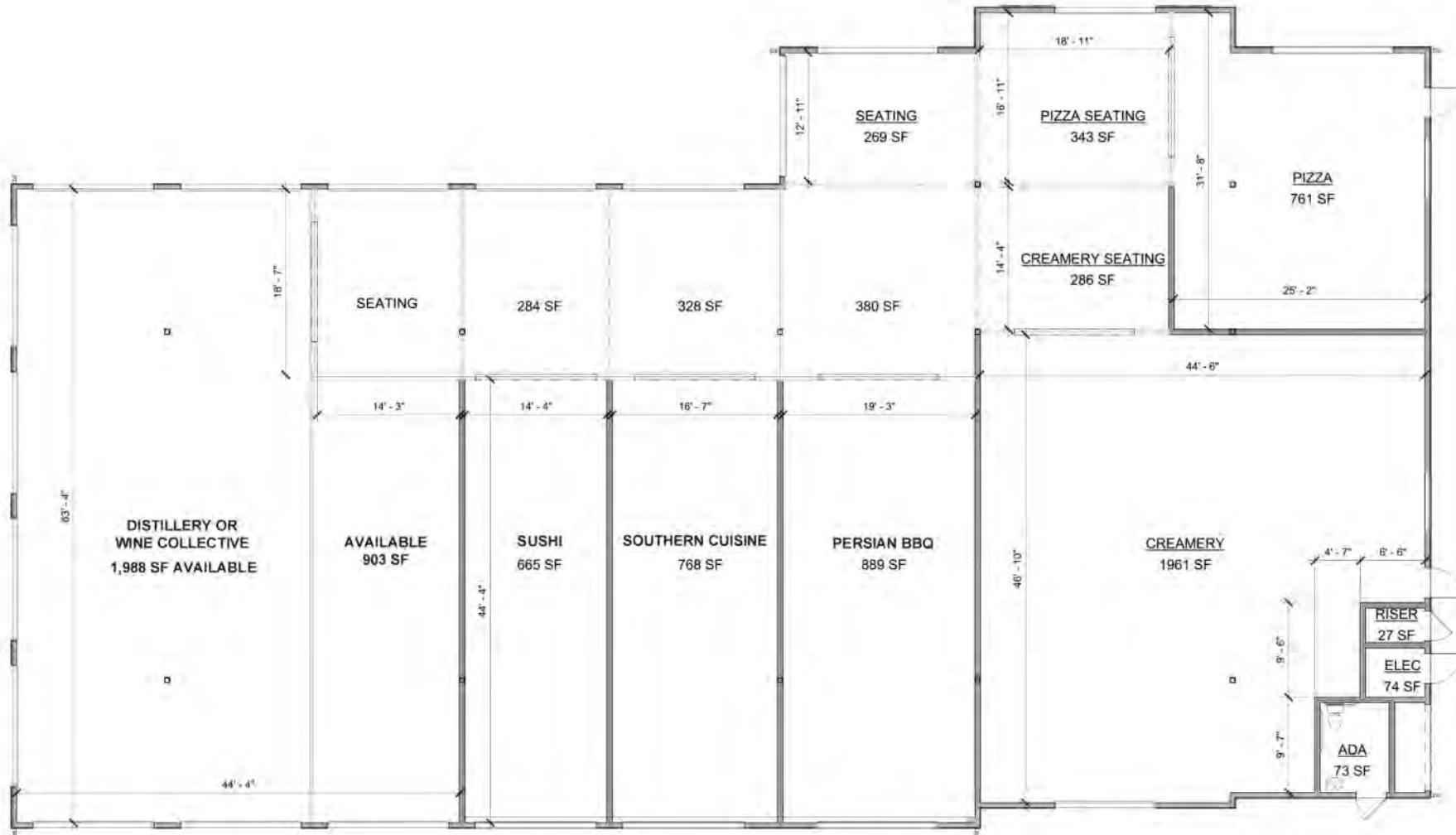


170 West Grand Ave, Suite 203
Grover Beach, CA 93433

Office 805.481.9010
Fax 805.880.8100
Web www.hartcre.com

Jason Hart
Broker
Mobile 805.709.6491
Email jason@hartcre.com

AG PROCESSING BUILDING FLOOR PLAN

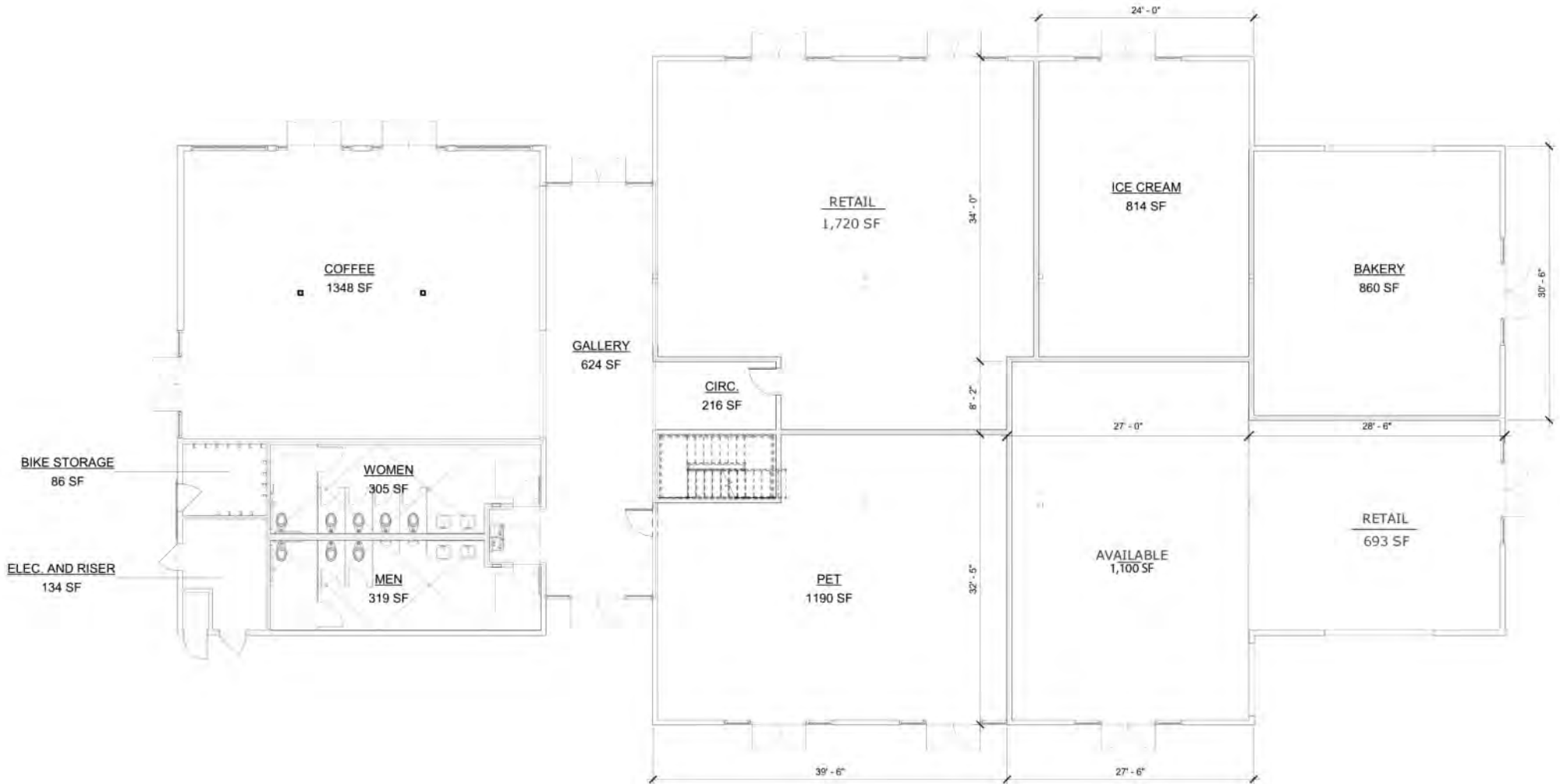


170 West Grand Ave, Suite 203
Grover Beach, CA 93433

Office 805.481.9010
Fax 805.880.8100
Web www.hartcre.com

Jason Hart
Broker
Mobile 805.709.6491
Email jason@hartcre.com

RETAIL BUILDING FLOOR PLAN



170 West Grand Ave, Suite 203
Grover Beach, CA 93433

Office 805.481.9010
Fax 805.880.8100
Web www.hartcre.com

Jason Hart
Broker
Mobile 805.709.6491
Email jason@hartcre.com

WINE BAR/DISTILLERY WITH OUTDOOR BAR RENDERING



170 West Grand Ave, Suite 203
Grover Beach, CA 93433

Office 805.481.9010
Fax 805.880.8100
Web www.hartcre.com

Jason Hart
Broker
Mobile 805.709.6491
Email jason@hartcre.com

SITE PLAN BIRD'S EYE



170 West Grand Ave, Suite 203
Grover Beach, CA 93433

Office 805.481.9010
Fax 805.880.8100
Web www.hartcre.com

Jason Hart
Broker
Mobile 805.709.6491
Email jason@hartcre.com

SAN LUIS RANCH SITE PLAN

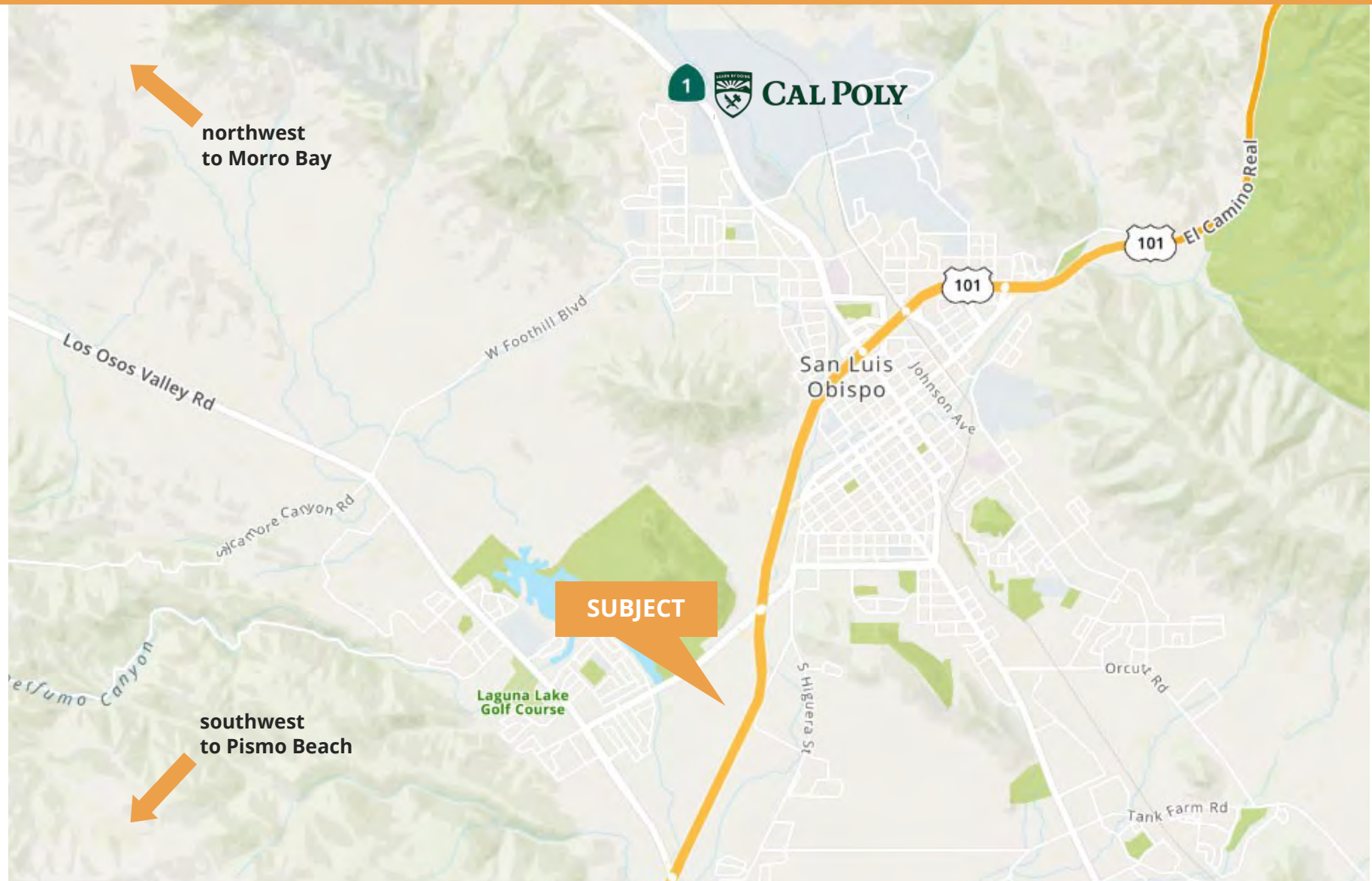


170 West Grand Ave, Suite 203
Grover Beach, CA 93433

Office 805.481.9010
Fax 805.880.8100
Web www.hartcre.com

Jason Hart
Broker
Mobile 805.709.6491
Email jason@hartcre.com

AREA MAP



170 West Grand Ave, Suite 203
Grover Beach, CA 93433

Office 805.481.9010
Fax 805.880.8100
Web www.hartcre.com

Jason Hart
Broker
Mobile 805.709.6491
Email jason@hartcre.com

ELEVATIONS



170 West Grand Ave, Suite 203
Grover Beach, CA 93433

Office 805.481.9010
Fax 805.880.8100
Web www.hartcre.com

Jason Hart
Broker
Mobile 805.709.6491
Email jason@hartcre.com

ELEVATIONS



170 West Grand Ave, Suite 203
Grover Beach, CA 93433

Office 805.481.9010
Fax 805.880.8100
Web www.hartcre.com

Jason Hart
Broker
Mobile 805.709.6491
Email jason@hartcre.com

COMMUNITY OVERVIEW

San Luis Obispo is approximately 190 miles north of Los Angeles and 230 miles south of San Francisco. The city, locally referred to as SLO, is the county seat of San Luis Obispo County and is adjacent to renowned California Polytechnic State University.

San Luis Obispo continually ranks among the premier places to live and visit in the United States. Each year San Luis Obispo finds its way onto dozens of lists featuring the activities, natural resources, food and wine scene, shopping, entertainment and the many benefits that make San Luis Obispo so special.

San Luis Obispo is famous for its downtown farmers' market where vendors sell food and goods and various visual and music artists perform, it's renowned wine regions, the San Luis Obispo International Film Festival, and breathtaking nearby beaches just to name a few.

DEMOGRAPHICS

	1 MILE	5 MILES	10 MILES
2020 POPULATION	6,731	64,624	94,251
2025 PROJECTION	6,628	65,380	95,361
MEDIAN AGE	33.9	31.9	35.3
2020 HOUSEHOLDS	2,650	21,920	34,601
AVERAGE HH INCOME	\$90,257	\$86,998	\$95,351
OWNER OCCUPIED	1,342	8,735	16,652
RENTER OCCUPIED	1,308	13,185	17,949



170 West Grand Ave, Suite 203
Grover Beach, CA 93433

Office 805.481.9010
Fax 805.880.8100
Web www.hartcre.com

Jason Hart
Broker
Mobile 805.709.6491
Email jason@hartcre.com